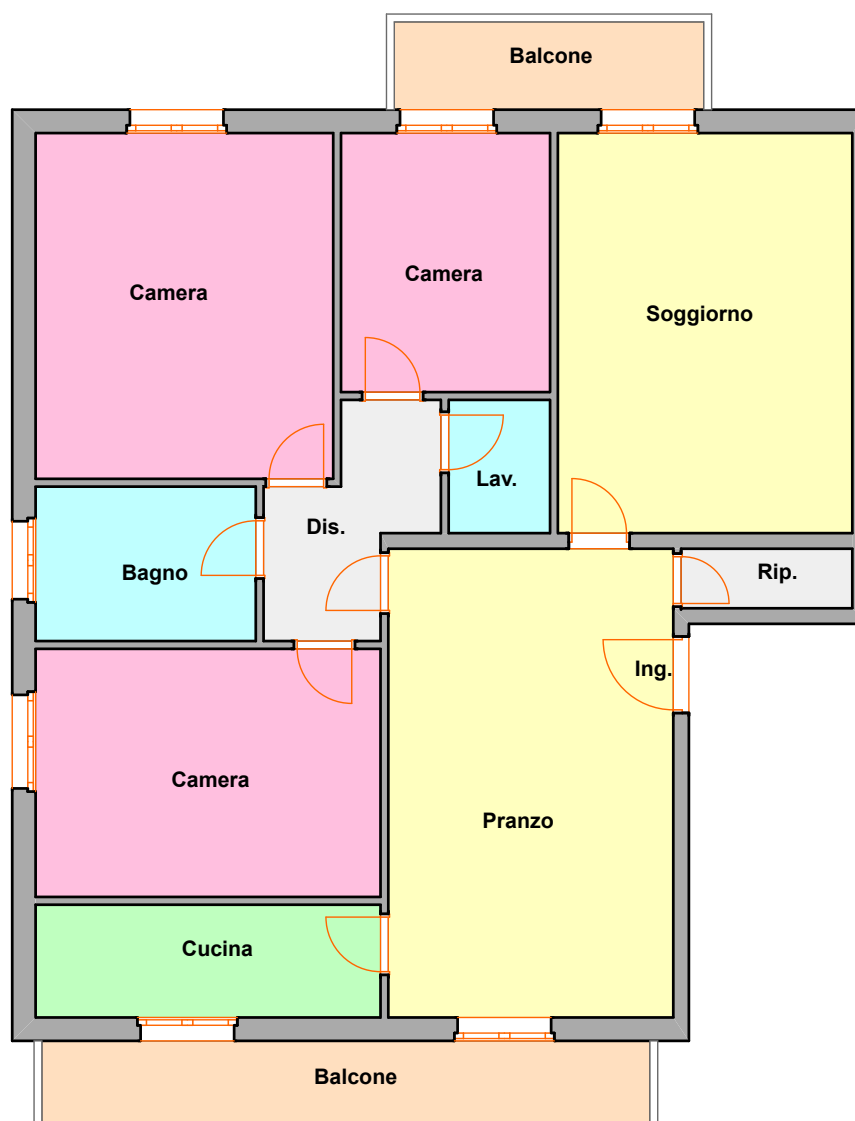


Destinazione	Piano	m <sup>2</sup> lordi	% comm.le	m <sup>2</sup> comm.li
Abitazione	secondo	114,80	100%	114,80
Balconi	secondo	13,00	50%	6,50
Soffitta	terzo	27,70	33%	9,14
Cantina	S1	12,91	33%	4,26
Garage	terra	15,10	50%	7,55
<b>TOTALI M<sup>2</sup> COMMERCIALI</b>				<b>142,25</b>



**Piano secondo**